

User Instructions

OPEL FIX Child Seat

Following versions can be used:

OPEL FIX Child Seat with Impact-absorbing Cushion

Weight Category I (9* up to 18 kg)

OPEL FIX Child Seat

Weight Category II (15 up to 25 kg)

OPEL FIX Child Seat Shell

Weight Category III (22 up to 36 kg)

* We only recommend use of the child seat with the impact-absorbing cushion for children weighing more than 11 kg.

Approved as specified in ECE Regulation No. 44/03 (vehicle specific and universal).

For installation facing direction of travel on the rear seat or on the front passenger seat.

Suitable for use in the following OPEL vehicles once fitted with the genuine OPEL FIX fastening system by an authorised dealership:

Corso B, Astra G, Vectra B, Omega B



In other vehicles without genuine OPEL FIX fastening system:

Only suitable for use in vehicles which are equipped with a 3-point seat belt which conforms to ECE Regulation No. 16 or another comparable standard.

Important General Safety Advice

This child safety system is approved as specified in the European standard for child restraint systems ECE R 44/03. The certification mark and the authorisation number can be found on the orange label.

For vehicles which are equipped with co-driver's airbag or driver's airbag and side airbags!

Only use the outer rear seats to install the child safety system. The airbag can endanger a child when an accident occurs if the child is seated in an unfavourable position.

For daily use!

The user's instructions must be observed precisely. It is not permitted to modify the child safety system in any manner as this will impair the degree of safety offered.

Never leave your child unsupervised in the child safety system.

Give your child short breaks when driving on long journeys and ensure that your child never gets out of the vehicle on the driver's side when unsupervised. Always make use of the child locks in passenger car doors, if fitted.

When installing the seat:

Please note that all belts for fastening the child safety system must always be securely tensioned. The child restraint belts must be pulled tight and must not be twisted.

Slack belts considerably reduce the degree of safety offered and experience demonstrates that this subjects the child's body to considerably greater loads in the event of an accident.

Guide the lap belt so that it is tight against the lower pelvis in order to prevent internal injuries resulting from an accident. The belt clamp fitted to the child seat must be used for children weighing up to 22 kg to ensure that the child does not slacken the belt and thus permit the lap belt to slip towards the child's stomach. For the OPEL FIX Child Seat with impact-absorbing cushion: ensure that the impact-absorbing cushion is pulled against the torso as tight as possible and that the belt cannot become slack.

Keep the accessory components for the child safety system in a safe place and ensure that individual parts are not lost during the installation procedure. Hard and plastic components of the child safety system must be located so they cannot be trapped between the vehicle doors or adjustable seats during daily use.

Securing Passengers and Luggage

Luggage or other objects which could cause injury in the event of an accident must be adequately secured. Do not place objects on the rear shelf – they can become dangerous projectiles in the event of an accident. If transporting the child safety system without a child passenger, please secure the child safety system with the adult seat belt.

Always ensure that all passengers always wear a seat belt. Passengers not wearing a seat belt can present a considerable hazard to children secured in the child safety system.

Following an Accident

Your child safety system must be replaced if it has been subjected to considerable stress as the result of an accident.

When converting the OPEL FIX Child Seat

The OPEL FIX Child Seat can be converted into an OPEL FIX Child Seat shell.

Read the conversion instructions and installation instructions.

The impact-absorbing cushion can be ordered from OPEL dealerships as an accessory to upgrade the OPEL FIX child seat to the OPEL FIX child seat with impact-absorbing cushion version (Category I).

Environment

All materials are free from HCFCs.



Installation Instructions OPEL FIX Child Seat with Impact-absorbing Cushion WITH Genuine OPEL FIX Fastening System

Weight Category I (body weight 9* up to 18 kg)

* We only recommend use of the child seat with the impact-absorbing cushion for children weighing more than 11 kg.

Step 1: Fastening the OPEL FIX adapter (illus. 1 up to 2)

Installation on the rear seat: Place the height adjustment wedge on the rear seat.

Installation on the co-driver's seat:

(without co-driver's airbag or co-driver's airbag and side airbag): The height adjustment wedge is not used.

Take the adapter and clip the seat-belt buckles in the mounts provided (as shown in illus. 2).

Step 2: Fastening the child seat (illus. 3)

Position the child seat in front of the adapter as installed in the vehicle. Slide it rearwards. Both fastening locks must thereby audibly engage (illus. 3). Check whether the buckles are properly engaged by jerking the seat backwards.

This concludes the installation procedure.

Finally, check whether the child seat is properly secured once again.

Securing the child

Step 1: Seating the child (illus. 4 and 5)

Seat the child in the child seat. Take the impact-absorbing cushion and guide the partially withdrawn 3-point seat belt through the guide slot of the impact absorbing cushion. First guide the diagonal belt over the impact-absorbing cushion. Audibly engage the buckle latch in the seat-belt buckle.

Step 2: Fastening the impact-absorbing cushion and the belt guide (illus. 6)

The lap belt section and the diagonal belt are routed above the belt guide lug. Then pull on the diagonal belt forcefully so that the impact-absorbing cushion is pulled tight against the child's torso. Then lay the securely tensioned diagonal belt likewise in the guide slot of the impact-absorbing cushion (illus. 6). Both belts must lie in the red lateral slots of the metal support and so ensure the belt sections do not become slack.

This secures the child in position.



Installation Instructions OPEL FIX Child Seat with Impact-absorbing Cushion WITHOUT Genuine OPEL FIX Fastening System

Weight Category I (body weight 9* up to 18 kg)

* We only recommend use of the child seat with the impact-absorbing cushion for children weighing more than 11 kg.

The OPEL FIX Child Seat (together with the child) is then simply fastened with the vehicle on-board 3-point seat belt system.

Position the child seat on the co-driver's seat or the rear seat. Slide the child seat rearwards so that the OPEL FIX Wedge is guided in the gap between the backrest and the seat cushion.

Securing the child

Step 1: Seating the child (illus. 4 and 5)

Seat the child in the child seat. Take the impact-absorbing cushion and guide the partially withdrawn 3-point seat belt through the guide slot of the impact absorbing cushion. First guide the diagonal belt over the impact-absorbing cushion. Audibly engage the buckle latch in the seat-belt buckle.

Step 2: Fastening the impact-absorbing cushion and the belt guide (illus. 6)

Lay the lap belt section under the belt guide lugs indicated with a red arrow. The diagonal belt is routed above the belt guide lug. Then pull on the diagonal belt forcefully so that the impact-absorbing cushion is pulled tight against the child's torso. Then lay the securely tensioned diagonal belt likewise in the guide slot of the impact-absorbing cushion. Both belts must lie in the red lateral slots of the metal support and so ensure the belt sections do not become slack.

This secures the child in position.



Installation Instructions **OPEL FIX Child Seat** **WITH Genuine OPEL FIX Fastening System**

Weight Category II **(body weight 15 up to 25 kg)**

Step 1: Fastening the OPEL FIX adapter (illus. 1 up to 2)

Installation on the rear seat: Place the height adjustment wedge on the rear seat.

Installation on the co-driver's seat:

(without co-driver's airbag or co-driver's airbag and side airbag): The height adjustment wedge is not used.

Take the adapter and clip the belt locks in the mounts provided (as shown in illus. 2).

Step 2: Fastening the child seat (illus. 3)

Position the child seat in front of the adapter as installed in the vehicle. Slide it rearwards. Both fastening locks must thereby audibly engage (illus. 3). Check whether the buckles are properly engaged by jerking the seat backwards.

This concludes the installation procedure. Finally, check whether the child seat is properly secured once again.

Securing the child

Step 1: Seating the child

Seat the child in the child seat. Take the 3-point seat belt and audibly engage the buckle latch in the seat-belt buckle.

Step 2: Guiding the belt (illus 8 and 9)

Lay the lap belt section under the belt guide lugs indicated with a red arrow and lay the diagonal belt above the belt guide lug.

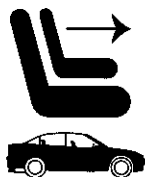
Adjusting the upper belt guide to the shoulder height of the child (illus. 11)

The diagonal belt must be guided so that it is routed over the child's shoulder, the child cannot slip out under the belt and the belt is not too close to the child's throat.

You can correspondingly adjust the belt guide by pulling the detent knob behind the belt clamp and positioning the clamp at the correct height. To do this, open the cover and close it once the adjustment procedure is completed.

Step 3: Locking the belt system (illus. 10)

Open the red cover on the belt clamp. Then pull on the diagonal belt forcefully so that the lap belt is pulled tight against the child's pelvis. Then lay the securely tensioned diagonal belt in the guide for the belt clamp and close the cover.



Installation Instructions

OPEL FIX Child Seat

WITHOUT Genuine OPEL FIX Fastening System

Weight Category II

(body weight 15 up to 25 kg)

The OPEL FIX Child Seat (together with the child) is then simply fastened with the vehicle on-board 3-point seat belt system.

Position the child seat on the co-driver's seat or the rear seat. Slide the child seat rearwards so that the OPEL FIX Wedge is guided in the gap between the backrest and the seat cushion.

Securing the child

Step 1: Seating the child

Seat the child in the child seat. Take the 3-point seat belt and audibly engage the buckle latch in the seat-belt buckle.

Step 2: Guiding the belt (illus 8 and 9)

Lay the lap belt section under the belt guide lugs indicated with a red arrow and lay the diagonal belt above the belt guide lug.

Adjusting the upper belt guide to the shoulder height of the child (illus. 11)

The diagonal belt must be guided so that it is routed over the child's shoulder, the child cannot slip out under the belt and the belt is not too close to the child's throat.

You can correspondingly adjust the belt guide by pulling the detent knob behind the belt clamp and positioning the clamp at the correct height. To do this, open the cover and close it once the adjustment procedure is completed.

Step 3: Locking the belt system (illus. 10)

Open the red cover on the belt clamp. Then pull on the diagonal belt forcefully so that the lap belt is pulled tight against the child's pelvis. Then lay the securely tensioned diagonal belt in the guide for the belt clamp and close the cover.



Conversion for OPEL FIX Child Seat Shell

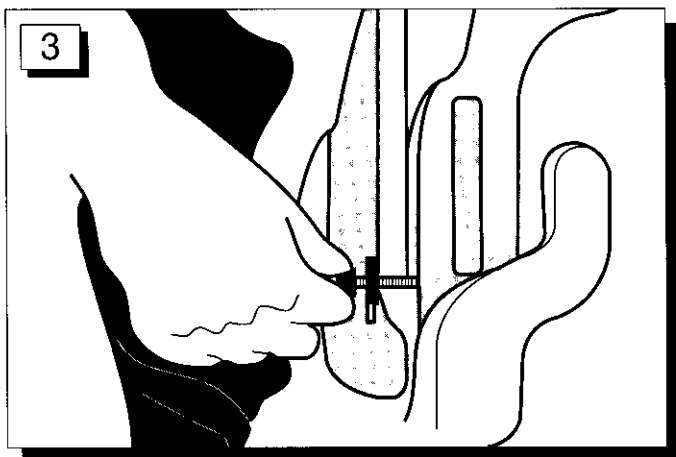
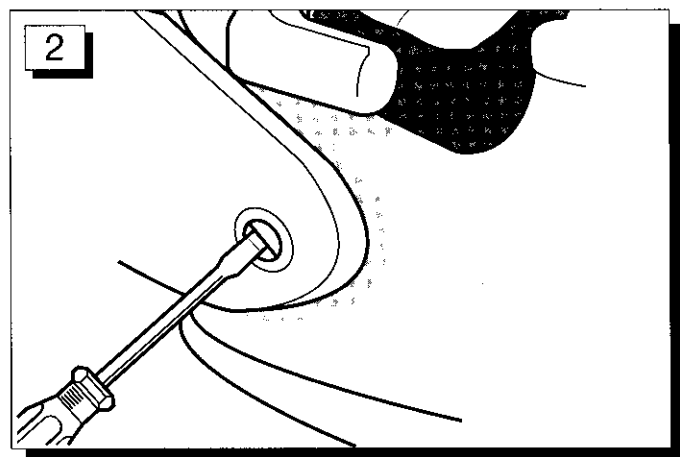
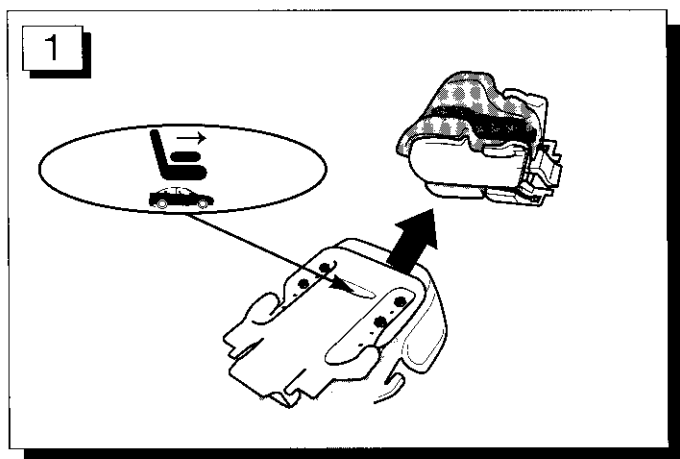
The OPEL FIX child seat is initially facing forwards.

Step 1: Removing the backrest

- Remove both of the slotted screws on the lower section of the backrest with a screwdriver and remove the backrest (see illus. 2 and 3).

Step 2: Adjusting the OPEL FIX Wedge

- Remove the Phillips-head screws and slide the wedge forwards until the symbol shown in illus. 1 is visible. Re-tighten the Phillips-head screws again.





Installation Instructions

OPEL FIX Child Seat Shell

WITH Genuine OPEL FIX Fastening System

Weight Category III

(body weight 22 up to 36 kg/150 cm)

Step 1: Fastening the OPEL FIX adapter (illus. 1 up to 2)

Installation on the rear seat: Place the height adjustment wedge on the rear seat.

Installation on the co-driver's seat:

(without co-driver's airbag or co-driver's airbag and side airbag): The height adjustment wedge is not used.

Take the adapter and clip the seat-belt buckles in the mounts provided (as shown in illus. 2).

Step 2: Fastening the child seat (illus. 12)

Position the child seat in front of the adapter as installed in the vehicle. Slide it rearwards. Both fastening locks must thereby audibly engage (illus. 12). Check whether the buckles are properly engaged by jerking the seat backwards.

This concludes the installation procedure. Finally, check whether the child seat is properly secured once again.

Securing the child

Step 1: Seating the child

Seat the child in the child seat. Take the 3-point seat belt and audibly engage the buckle latch in the seat-belt buckle.

Step 2: Guiding the belt (illus 8 and 9)

Lay the lap belt section under the belt guide lugs indicated with a red arrow and lay the diagonal belt above the belt guide lug.

Pull forcefully on the diagonal belt so that the lap belt is pulled tight against the child's pelvis.

The diagonal belt must be guided so that it is routed over the child's shoulder (illus. 13), the child cannot slip out under the belt and the belt is not too close to the child's throat. Correct the routing if necessary by altering the height adjustment of the upper belt guide (illus. 14).

Ensure the child does not place the diagonal belt behind its back while you are driving.



Installation Instructions

OPEL FIX Child Seat Shell

WITHOUT Genuine OPEL FIX Fastening System

Weight Category III

(body weight 22 up to 36 kg/150 cm)

The OPEL FIX Child Seat (together with the child) is then simply fastened with the vehicle on-board 3-point seat belt system.

Position the child seat on the co-driver's seat or the rear seat. Slide the child seat rearwards so that the OPEL FIX Wedge is guided in the gap between the backrest and the seat cushion.

Securing the child

Step 1: Seating the child

Seat the child in the child seat. Take the 3-point seat belt and audibly engage the buckle latch in the seat-belt buckle.

Step 2: Guiding the belt (illus 8 and 9)

Lay the lap belt section under the belt guide lugs indicated with a red arrow and lay the diagonal belt above the belt guide lug.

Pull forcefully on the diagonal belt so that the lap belt is pulled tight against the child's pelvis.

The diagonal belt must be guided so that it is routed over the child's shoulder (illus. 13), the child cannot slip out under the belt and the belt is not too close to the child's throat. Correct the routing if necessary by altering the height adjustment of the upper belt guide (illus. 14).

Ensure the child does not place the diagonal belt behind its back while you are driving.

Care Instructions

Basic stain removal:

Only wipe from the outer edge of the stain towards the centre of the stain in order to prevent it leaving permanent traces.

Stain removal table for special types of stains:

Type of stain	What has to be done?
Blood	Treat with cold saline solution (mixture: 2 teaspoons of cooking salt to 1 litre of water), wash off and dab with a hand cloth, treat the rest with a mild upholstery shampoo. Then rinse with clean water.
Butter	Lift carefully from fabric with the blunt end of a knife. Then carefully dab off the remaining residue. Remove other residue with a non-water base solvent (e.g., benzene).
Vomit	Treat with cold saline solution.
Fruit or berry stains	Treat with cold mild detergent solution and rinse with clean water.
Chewing gum	Remove the chewing gum from the surface with a blunt knife. Spray any remaining stain with a freezing spray. The stain can then be removed by brushing or through abrasion.
Ketchup	Lift with blunt end of knife. Dab off residue and then treat with an upholstery shampoo if required.
Mud	Remove as well as possible with blunt end of knife. Allow residue to dry and then remove with vacuum cleaner. Treat with shampoo if there is still a stain.
Soft drinks	Dab the liquid off immediately with an absorbent cloth, tissue or sponge.
Drinking chocolate or coffee	Wash out with lukewarm mild detergent solution and rinse with clean water.
Urine, sweat, slime	Dab off as well as possible and remove residue with upholstery shampoo, rinse out thoroughly.